

Township of Manalapan

PARKS & RECREATION

Newsletter

VOLUME 9; FEBRUARY 22



Office Phone: (732) 446-8336 & (732) 446-8353
Office Hours: Monday – Friday 8:30AM – 4:30PM



DID YOU CREATE YOUR RECDESK ACCOUNT?

We're excited to announce we changed registration platforms! Community Pass is no longer available, please create your RecDesk account now to register for spring programs and, on March 4, summer camp.

To ensure a smooth transition, it is important to set up your RecDesk account prior to Summer Camp registration.



To Create an Account:

Scan the QR code or Visit:
<https://manalapan.recdesk.com/>

IMPORTANT DATES TO REMEMBER:

Summer Camp Registration:

Recreation Camp: Monday, March 4 at 6 pm

Sports Camps at MHS: Monday, March 11 at 9 am

You must have a RecDesk account to register!

Please contact Manalapan Parks & Recreation with questions.
732.446.8336

DID YOU HEAR THE BUZZ?

SPRING PROGRAM REGISTRATION IS OPEN!



Storytime Adventures

Ages 2-4 with Adult



Zumba Toning

Adults 16+



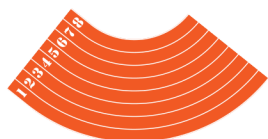
Hockey Fundamentals Roller & Street

Ages 4-14



Advanced Acting Awakenings Style

Grades 7-8



Gone Running

Grades 3-10



Multi Sports Squirts

Ages 1.5-3.5 with Adult



Pickleball Advanced Beginner

Adults



Youth Pickleball

Grades 4-9



Beginner Sound Meditation

Grade 7-Adults



Total Body Conditioning

Adults




← Scan to Register!

**MANALAPAN PARKS & RECREATION AND
MANALAPAN HIGH SCHOOL PRESENT:**

M *Braves*

FOUR – DAY “BE A BRAVE” SPORTS CAMPS



**LACROSSE
FOOTBALL
BASKETBALL
SOCCER**



**BASEBALL & SOFTBALL
WRESTLING
FIELD HOCKEY
CHEERLEADING**

New this summer! Manalapan Parks and Recreation and Manalapan High School are partnering to bring the community Four - Day Athletic Camps taught by Manalapan High School coaches. There is something for every child to try!

REGISTRATION BEGINS MARCH 11 AT 9 AM



LEAPING INTO 2024



THURSDAY, FEBRUARY 29, 2024

We've waited four years for this! 2024 is a Leap Year, meaning we all get to enjoy an additional day this February. The Earth takes 365.25 days to orbit around the sun. This is also called a solar year. Every four years, an extra day is added to our calendar to account for these .25 days. How will you spend your extra day?

<https://spaceplace.nasa.gov/leap-year/en/>

SAVE THE DATE

S.O.A.R. Earth Day Celebration

Join us at the Dreyer Pavilion for a morning of crafts, learning and most importantly, fun!

Stop by to pot-a-plant in celebration of Earth Day and learn more about the S.O.A.R. program for children with special needs.

Saturday, April 20; 9am-11am
Dreyer Pavilion
Manalapan Recreation Center

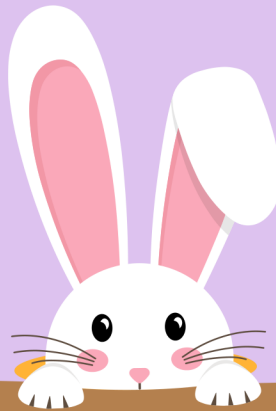
*This program is designed for children with special needs. Parents must stay to chaperone their child for the length of the program. Participation available while supplies last. Please contact Katie O'Brien with questions regarding special needs programs: kobrien@mtnj.org.

MANALAPAN PARKS AND RECREATION

EASTER

EGG HUNT

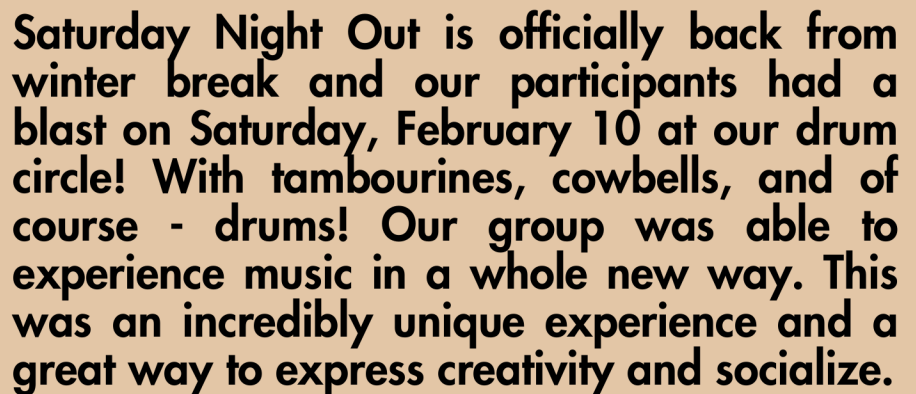
SAVE THE DATE



SATURDAY MARCH 23

11AM START
WEST END; FIELD K,
MANALAPAN RECREATION CENTER





Presidential National Parks & Monuments

Presidents Day was Monday, February 19.

Below are National Parks and Monuments affiliated with our past Presidents.

Have you visited any of these locations?



Ulysses S. Grant

Yellowstone National Park

On March 1, 1872, President Ulysses S. Grant signed the Yellowstone National Park Protection Act into law.



Theodore Roosevelt

The Summer White House

Sagamore Hill was the home of Theodore Roosevelt, 26th President of the United States, from 1885 until his death in 1919.



Harry S. Truman

Theodore Roosevelt National Park

President Truman signed the bill that created Theodore Roosevelt National Memorial Park 1941.



Mount Rushmore

Black Hills, South Dakota

Gutzon Borglum selected these four presidents because from his perspective, they represented the most important events in the history of the United States.

George Washington
Abraham Lincoln
Thomas Jefferson
Theodore Roosevelt

NATURE CORNER

facts about plants, animals & beyond!



Dashing Daffodils

In this edition of the Manalapan Parks and Recreation Newsletter, we continue our exploration of late winter and early spring blooms. Have you seen any flowers pop up recently?

With snow still expected for the Northeast region of the United States, it's hard to focus on flowers during this time of year. However, late winter and early spring flowers in the area don't seem to mind!

In addition to snowdrops and crocuses, daffodils are some of the first flowers that pop up at the tail end of winter. Look around outdoors and you will likely find daffodil buds coming up through the ground - even through snow! You may find combinations of yellow, orange and white flowers.



Dutch Master



Barrett Browning



Jetfire

<https://www.almanac.com/plant/daffodils>

WHAT'S THE DIFFERENCE? Perennials vs. Annuals

Daffodils are an example of a perennial plant, which means it will come back every late winter to bloom. Annual plants, however, will not come back seasonally and need to be replanted from year to year.

PARK SPOTLIGHT

THOMPSON GROVE PARK



Unleash the fun at Thompson Grove Park through fishing, hiking and bird watching!

Our off-leash dog park at Thompson Grove is open from dawn to dusk!



The lake is open for catch and release fishing all year round! Must have NJ Fishing License.



Did you know that Manalapan Township Parks & Recreation has 15 locations? From playgrounds to basketball courts, walking trails, and athletic fields - there is something for everyone at a park near you!



Scan to learn more about our Parks & Recreation active properties!

PAVILION RENTAL

Host your next event at one of our pavilions!



mtnj.org

Reservation packet available at:



departments



parks & recreation

Scan for more info!



@Manalapan_Parks_and_Recreation



@ManalapanRec

Contact Manalapan Parks & Recreation with questions
732.446.8336