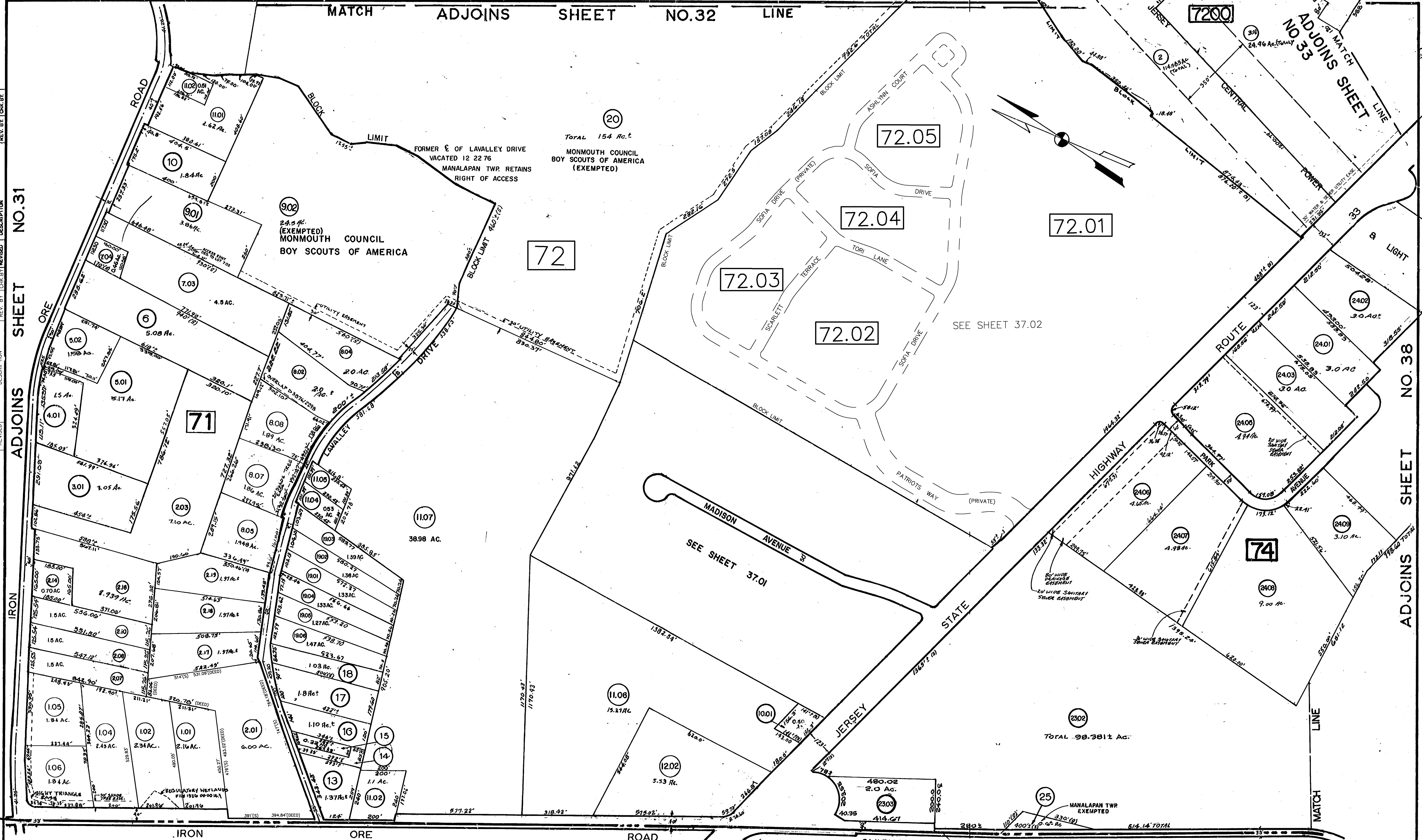


NO.	DATE	DESCRIPTION	REV. BY	CHK. BY	REV. BY
1	12/2006	PLAT			
2	12/2006	ADD BOUNDARY LOTS 2012-2028			
3	12/2006	ADD BOUNDARY LOTS 2012-2028			
4	12/2006	ADD BOUNDARY LOTS 2012-2028			
5	12/2006	ADD BOUNDARY LOTS 2012-2028			
6	12/2006	ADD BOUNDARY LOTS 2012-2028			
7	12/2006	ADD BOUNDARY LOTS 2012-2028			
8	12/2006	ADD BOUNDARY LOTS 2012-2028			
9	12/2006	ADD BOUNDARY LOTS 2012-2028			
10	12/2006	ADD BOUNDARY LOTS 2012-2028			
11	12/2006	ADD BOUNDARY LOTS 2012-2028			
12	12/2006	ADD BOUNDARY LOTS 2012-2028			
13	12/2006	ADD BOUNDARY LOTS 2012-2028			
14	12/2006	ADD BOUNDARY LOTS 2012-2028			
15	12/2006	ADD BOUNDARY LOTS 2012-2028			
16	12/2006	ADD BOUNDARY LOTS 2012-2028			
17	12/2006	ADD BOUNDARY LOTS 2012-2028			
18	12/2006	ADD BOUNDARY LOTS 2012-2028			
19	12/2006	ADD BOUNDARY LOTS 2012-2028			
20	12/2006	ADD BOUNDARY LOTS 2012-2028			
21	12/2006	ADD BOUNDARY LOTS 2012-2028			
22	12/2006	ADD BOUNDARY LOTS 2012-2028			
23	12/2006	ADD BOUNDARY LOTS 2012-2028			
24	12/2006	ADD BOUNDARY LOTS 2012-2028			
25	12/2006	ADD BOUNDARY LOTS 2012-2028			
26	12/2006	ADD BOUNDARY LOTS 2012-2028			
27	12/2006	ADD BOUNDARY LOTS 2012-2028			
28	12/2006	ADD BOUNDARY LOTS 2012-2028			
29	12/2006	ADD BOUNDARY LOTS 2012-2028			
30	12/2006	ADD BOUNDARY LOTS 2012-2028			
31	12/2006	ADD BOUNDARY LOTS 2012-2028			
32	12/2006	ADD BOUNDARY LOTS 2012-2028			
33	12/2006	ADD BOUNDARY LOTS 2012-2028			
34	12/2006	ADD BOUNDARY LOTS 2012-2028			
35	12/2006	ADD BOUNDARY LOTS 2012-2028			
36	12/2006	ADD BOUNDARY LOTS 2012-2028			
37	12/2006	ADD BOUNDARY LOTS 2012-2028			
38	12/2006	ADD BOUNDARY LOTS 2012-2028			
39	12/2006	ADD BOUNDARY LOTS 2012-2028			
40	12/2006	ADD BOUNDARY LOTS 2012-2028			

ADJOINS SHEET NO.31
 IRON ORE
 ADJOINS SHEET NO.33
 ADJOINS SHEET NO.38
 ADJOINS SHEET NO.37



IRON ORE ROAD MILLSTONE ROAD SMITHBURG ROAD NEW ROAD

MONMOUTH COUNTY

TOWNSHIP

TAX MAP TOWNSHIP OF MANALAPAN MONMOUTH COUNTY NEW JERSEY

1/2021	CME ASSOC. M.J. McGURL 38338
11/2010	CME ASSOC. M.J. McGURL 38338
12/2009	CME ASSOC. M.J. McGURL 38338
12/2006	CME ASSOC. M.J. McGURL 38338
12/2005	BIROBALL ENGINEERING INC WILLIAM SCHINDLER JR. 0327188
1/2004	C.M.E. ASSOC. MICHAEL J. McGURL P.L.S. 38338
11/2001	C.M.E. ASSOC. MICHAEL J. McGURL P.L.S. 38338
AS OF	
REVISED TO SHOW CONDITIONS	

NEW JERSEY DEPARTMENT OF THE TREASURY
 DIVISION OF TAXATION
 ENGINEERING & RAILROAD TAX BUREAU
 APPROVED AS A TAX MAP PURSUANT TO THE PROVISIONS OF CHAPTER 175, LAWS OF 1913, ETC. FOR THE DIRECTOR, DIVISION OF TAXATION
 BY: C. C. Barnes
 DATE: JUN 8 1961, SERIAL NO. 320
 STATE SUPERVISOR

ORIGINAL BY EDWARD A. BONUS - L.S. LIC. NO. 8317
 REVISED BY JOHN ALLGAIR - TOWNSHIP ENGINEER
 C.M.E. ASSOCIATES
 P.E. & L.S. N.J. LIC. NO. 12012