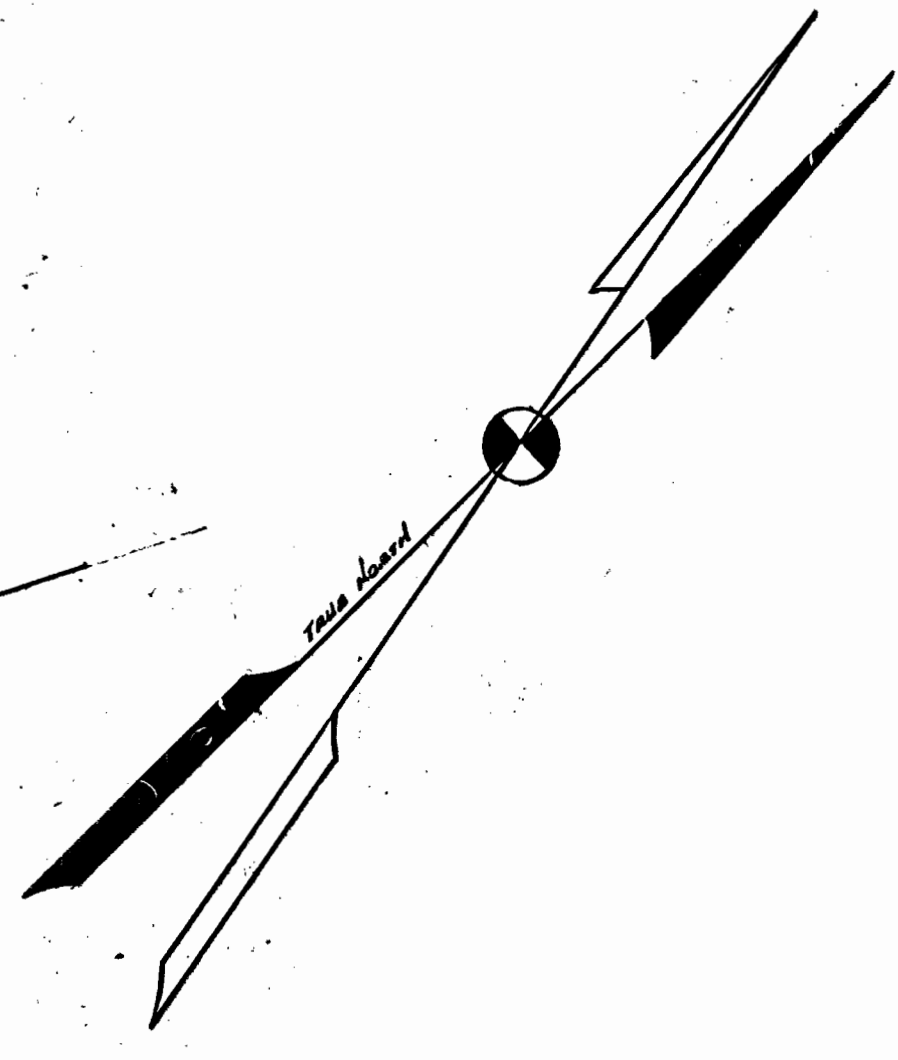
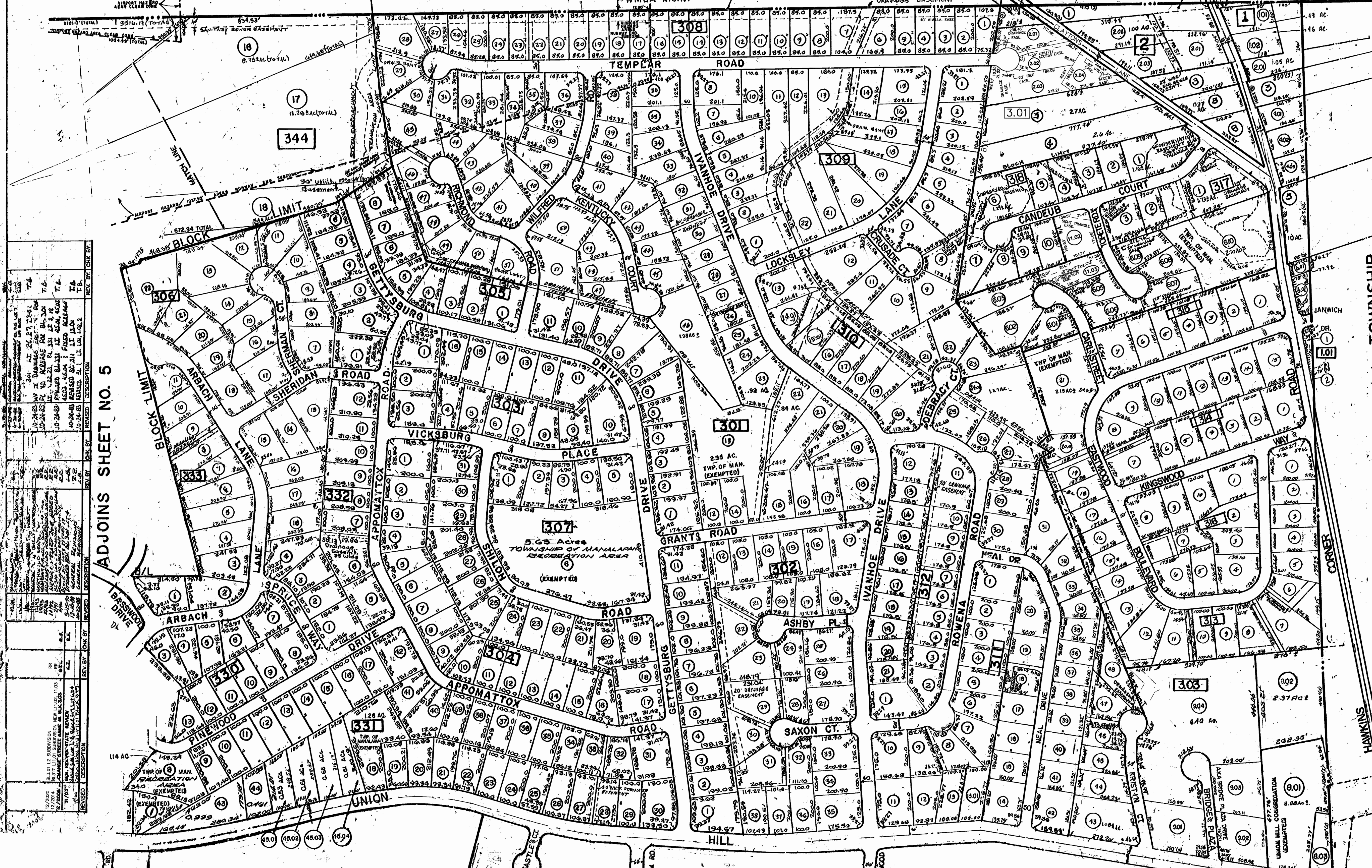


OLD BRIDGE TOWNSHIP MIDDLESEX COUNTY

WESTERN MONMOUTH UTILITIES AUTHORITY (EXEMPTED)

WMUA R.O.W.

DRAINAGE BASIN



ADJOINS SHEET NO. 5

TOWNSHIP MARLBORO MONMOUTH COUNTY

- INDICATES BLOCK NUMBER
- INDICATES LOT NUMBER
- ASSESSMENT LINE

NEW JERSEY DEPARTMENT OF THE TREASURY
 DIVISION OF TAXATION
 ENGINEERING & RAILROAD TAX BUREAU
 APPROVED AS A TAX MAP PURSUANT TO THE
 PROVISIONS OF CHAPTER 170, LAWS OF 1918, ETC.
 FOR THE DIRECTOR, DIVISION OF TAXATION
Cabana
 STATE SUPERVISOR
 DATE JUN 8 1960 SERIAL NO. 380

TAX MAP
 TOWNSHIP OF MANALAPAN
 MONMOUTH COUNTY NEW JERSEY
 SCALE 1"=200' MARCH 1960

ADJOINS SHEET NO. 6

ADJOINS SHEET NO. 2

REVISED BY BIRDALL ENG. INC. WILLIAM SCHINDLER, JR. 03/27/60 2-06
 REVISED BY BIRDALL ENG. INC. WILLIAM SCHINDLER, JR. 03/27/60 11/08
 REVISED BY ONE ASSOC. 12/68

ORIGINAL BY: EDWARD A. BONUS - L.S. LIC. NO. 8317
 REVISED BY: JOHN ALLGAIER - TOWNSHIP ENGINEER
 G.M.E. ASSOCIATES
 P.E. & L.S. N.J. LIC. NO. 12012