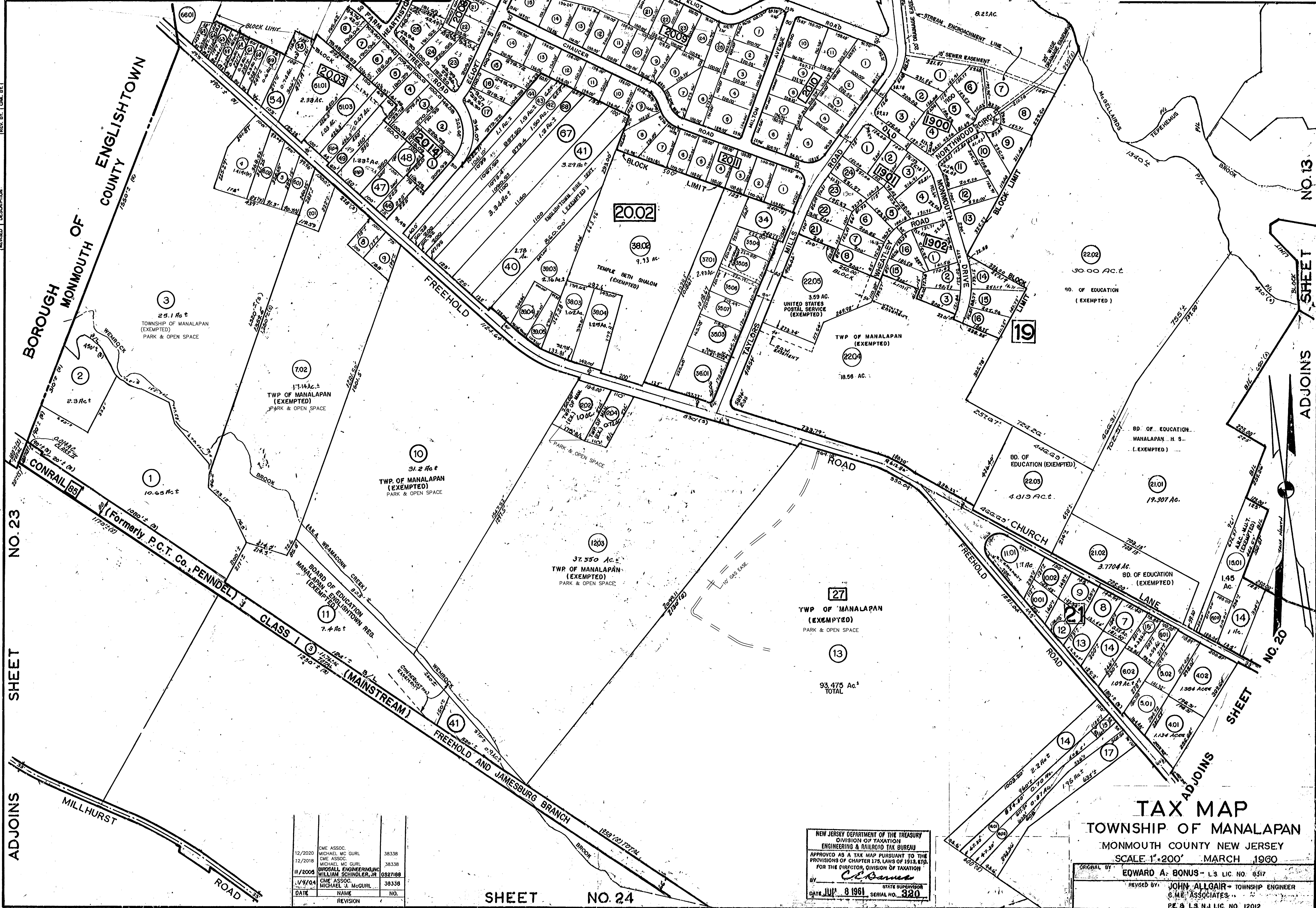


REVISED	DESCRIPTION
11/2008	REVISED PER STATE REVIEW
12/2010	REVISED PER STATE REVIEW
11/2005	REVISED PER STATE REVIEW
11/2004	REVISED PER STATE REVIEW
10/24/03	REVISED PER STATE REVIEW
09/24/03	REVISED PER STATE REVIEW
07/22/03	REVISED PER STATE REVIEW
07/22/03	REVISED PER STATE REVIEW
07/22/03	REVISED PER STATE REVIEW



ADJOINS SHEET NO. 23

ADJOINS SHEET

BOROUGH OF ENGLISHTOWN
MONMOUTH COUNTY

ADJOINS SHEET NO. 13

ADJOINS SHEET

ADJOINS SHEET NO. 20

ADJOINS

DATE	NAME	NO.
12/2020	CME ASSOC. MICHAEL MC GURL	38338
12/2018	CME ASSOC. MICHAEL MC GURL	38338
11/2006	BIROSALL ENGINEERING WILLIAM SCHINDLER, JR.	3827188
1/4/04	CME ASSOC. MICHAEL J. MCGURL	38339

SHEET NO. 24

NEW JERSEY DEPARTMENT OF THE TREASURY
DIVISION OF TAXATION
ENGINEERING & RAILROAD TAX BUREAU
APPROVED AS A TAX MAP PURSUANT TO THE
PROVISIONS OF CHAPTER 175, LAWS OF 1913, ETC.
FOR THE DIVISION OF TAXATION
DATE JUL 8 1961 SERIAL NO. 320

TAX MAP
TOWNSHIP OF MANALAPAN
MONMOUTH COUNTY NEW JERSEY
SCALE 1"=200' MARCH 1960

ORIGINAL BY: EDWARD A. BONUS - L.S. LIC. NO. 8317
REVISED BY: JOHN ALLOAIR - TOWNSHIP ENGINEER
S.M.E. ASSOCIATES, INC.
P.E. & L.S. N.J. LIC. NO. 12012