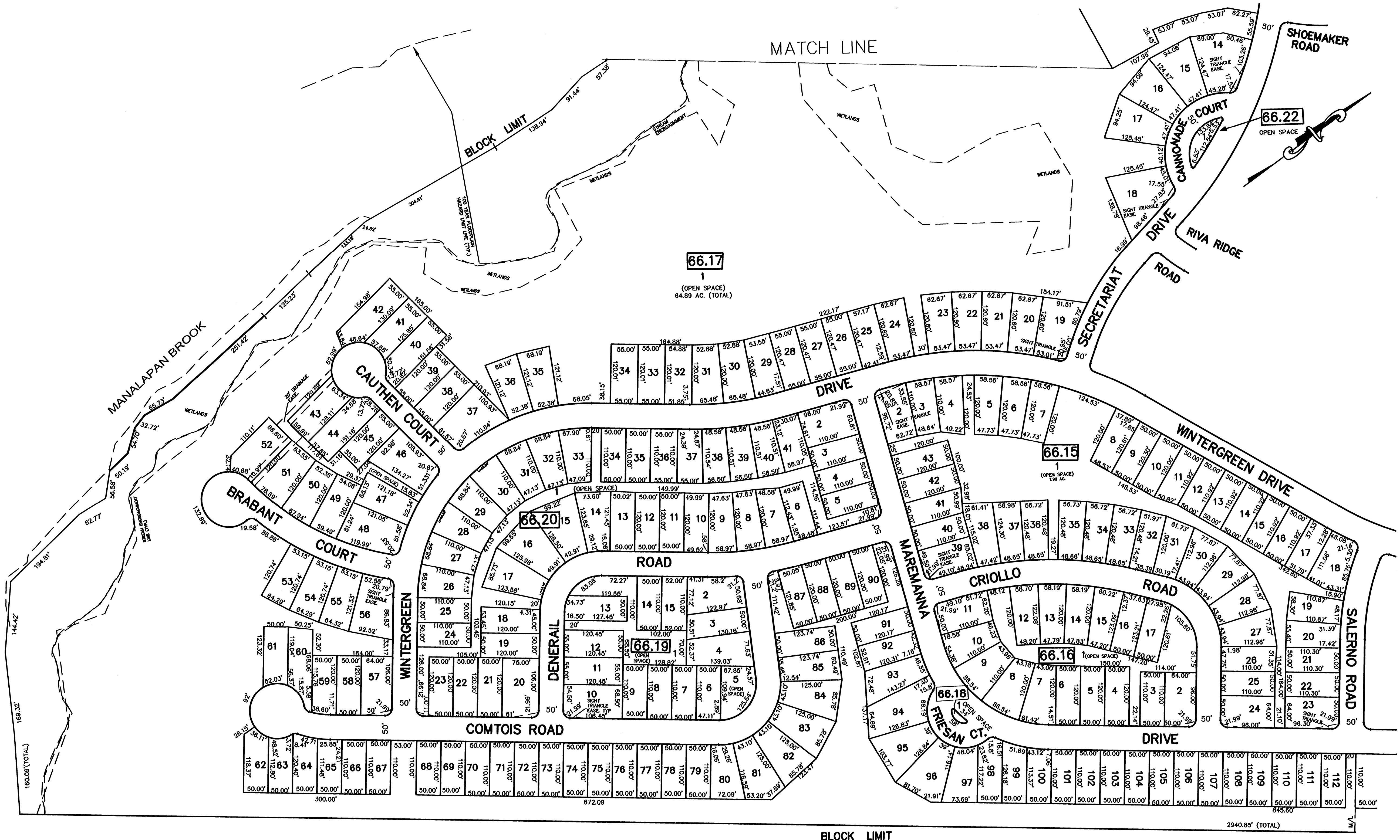


10/2007	REVISED	BLK 66 SUBDIVISION FOUR SEASONS AT MANALAPAN	DESCRIPTION
		R.R.	REV. BY
			CHK.

SHEET 34, 34.01



SHEET 34.05

SHEET 34

TAX MAP  
 MANALAPAN TOWNSHIP  
 MONMOUTH COUNTY, NEW JERSEY  
 SCALE : 1"= 100' DATE: OCT. 2007  
 MICHAEL J. McGURL, P.L.S.  
 CME ASSOCIATES  
 3141 BORDENTOWN AVENUE, PARLIN  
 NEW JERSEY, 08859