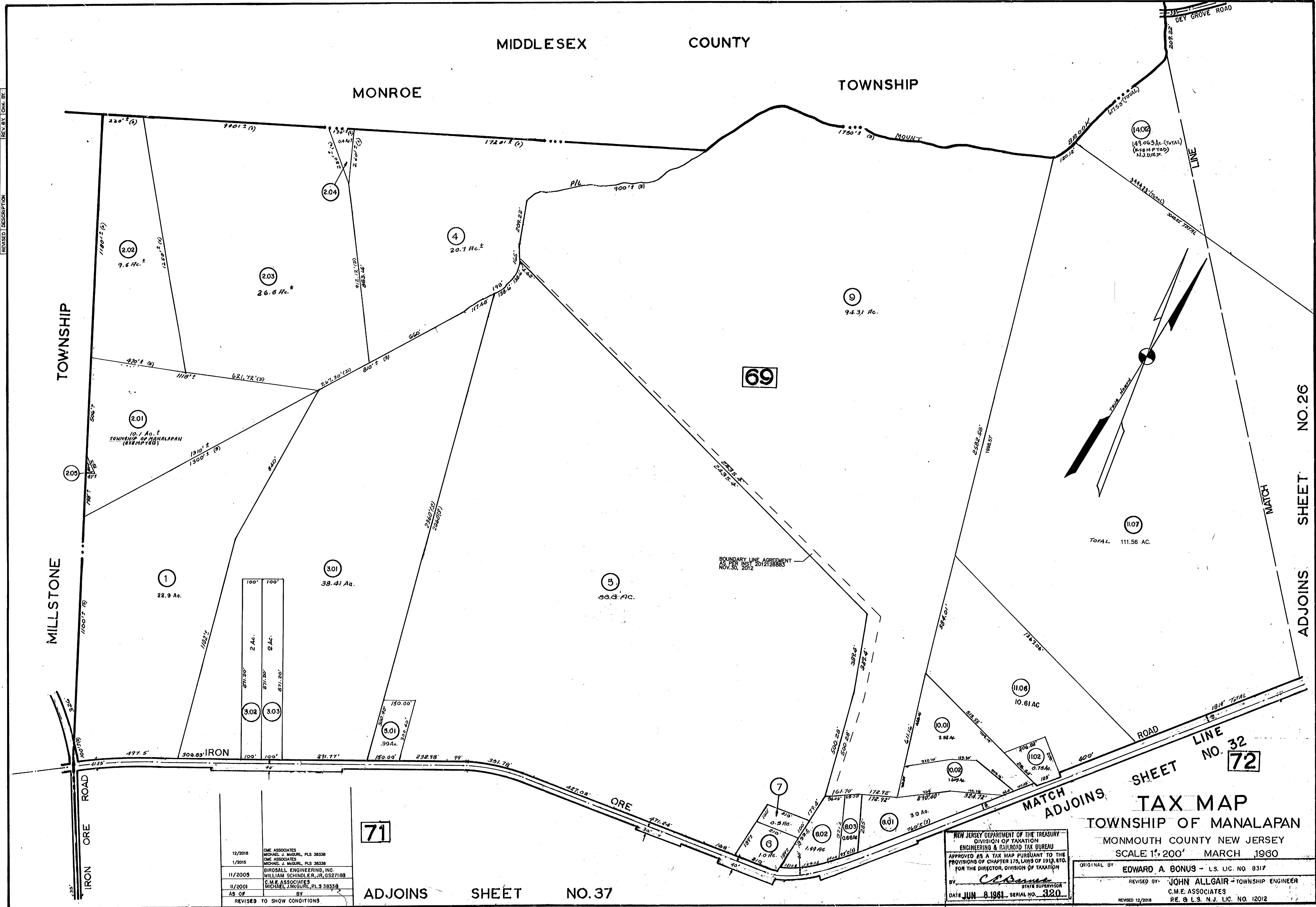


12/2018	REVISIONS PER STATE REVIEW	STL	R.F.
1/2015	DETAILED REVISIONS PER STATE REVIEW	STL	R.F.
11/2005	GENERAL REVISIONS	STL	R.F.
10/26/83	REVISED DESCRIPTION	STL	R.F.



12/2018	CME ASSOCIATES MICHAEL J. MCGURL, PLS 38338
1/2015	CME ASSOCIATES MICHAEL J. MCGURL, PLS 38338
11/2005	BIROSALL ENGINEERING, INC. WILLIAM SCHINDLER, JR., GS27188
11/2001	C.M.E. ASSOCIATES MICHAEL J. MCGURL, PLS 38338
AS OF	BY
REVISED TO SHOW CONDITIONS	

**71**  
ADJOINS SHEET NO. 37

NEW JERSEY DEPARTMENT OF THE TREASURY  
DIVISION OF TAXATION  
ENGINEERING & RAILROAD TAX BUREAU  
APPROVED AS A TAX MAP PURSUANT TO THE  
PROVISIONS OF CHAPTER 175, LAWS OF 1913, ETC.  
FOR THE DIRECTOR, DIVISION OF TAXATION  
*C.E. Davis*  
BY STATE SUPERVISOR  
DATE JUN 8 1961. SERIAL NO. 320

**TAX MAP**  
TOWNSHIP OF MANALAPAN  
MONMOUTH COUNTY NEW JERSEY  
SCALE 1" = 200' MARCH 1960  
ORIGINAL BY EDWARD A. BONUS - L.S. LIC. NO. 8317  
REVISED BY JOHN ALLGAIR - TOWNSHIP ENGINEER  
C.M.E. ASSOCIATES  
RE. & L.S. N.J. LIC. NO. 12012

ADJOINS SHEET NO. 26

MATCH ADJOINS SHEET NO. 32  
**72**