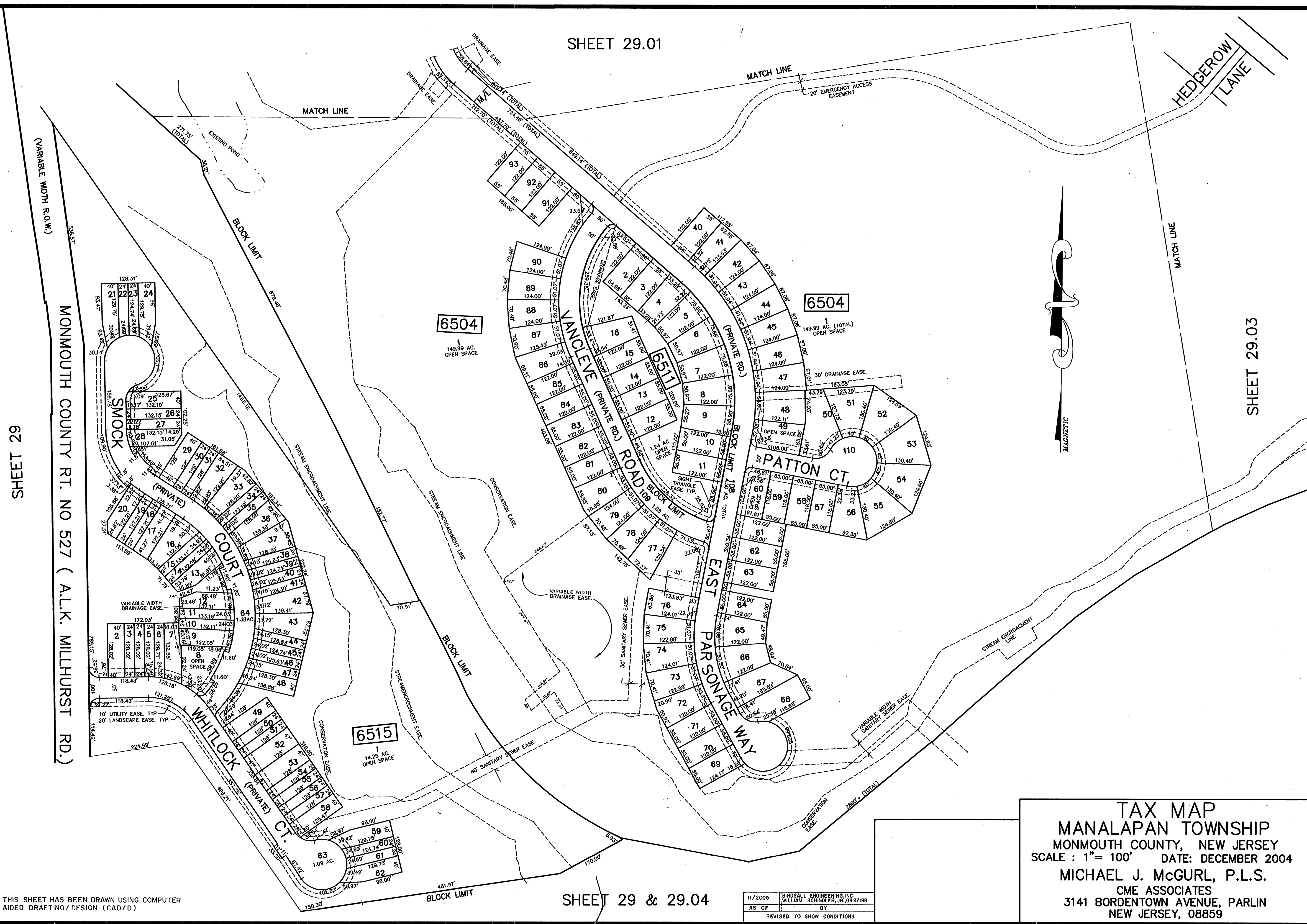


SHEET 29.01

11/2005	GEN. REVS. PER STATE REVIEW	G.T.L.
REVISED	DESCRIPTION	REV. BY
		CHK.



SHEET 29

MONMOUTH COUNTY RT. NO 527 (A.L.K. MILLHURST RD.)

(VARIABLE WIDTH R.O.W.)

HEDGEROW LANE

SHEET 29.03

THIS SHEET HAS BEEN DRAWN USING COMPUTER AIDED DRAFTING/DESIGN (CAD/D)

SHEET 29 & 29.04

11/2005	BIRDSALL ENGINEERING, INC.
AS OF	WILLIAM SCHINDLER, JR., 0327188
REVISED TO SHOW CONDITIONS	

TAX MAP
MANALAPAN TOWNSHIP
 MONMOUTH COUNTY, NEW JERSEY
 SCALE : 1" = 100' DATE: DECEMBER 2004
 MICHAEL J. MCGURL, P.L.S.
 CME ASSOCIATES
 3141 BORDENTOWN AVENUE, PARLIN
 NEW JERSEY, 08859