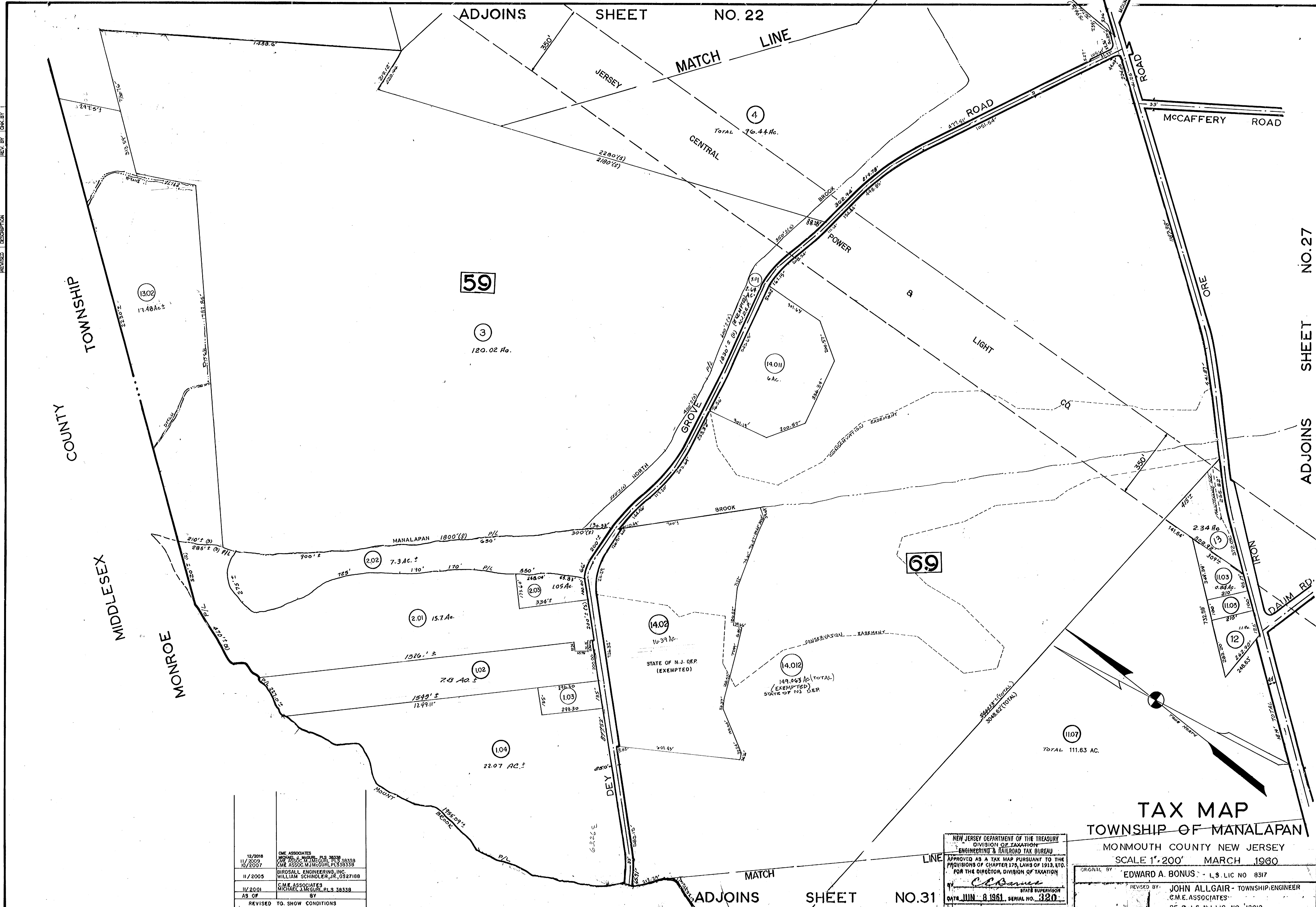


REV.	DATE	DESCRIPTION	CHK. BY
12/2018	12/2018	GENERAL REVISIONS	
11/2009	11/2009	GENERAL REVISIONS PER STATE REVIEW	
10/2007	10/2007	GENERAL REVISIONS PER STATE REVIEW	
11/2005	11/2005	GENERAL REVISIONS PER STATE REVIEW	
11/2001	11/2001	GENERAL REVISIONS PER STATE REVIEW	
AS OF			



12/2018	C.M.E. ASSOCIATES
11/2009	MICHAEL J. MCGURU, P.L.S. 38338
10/2007	C.M.E. ASSOC. INC. P.L.S. 38338
11/2005	GROSALL ENGINEERING, INC.
	WILLIAM SCHINDLER, JR., P.E. 0327188
11/2001	C.M.E. ASSOCIATES
	MICHAEL J. MCGURU, P.L.S. 38338
AS OF	BY
REVISED TO SHOW CONDITIONS	

NEW JERSEY DEPARTMENT OF THE TREASURY
 DIVISION OF TAXATION
 ENGINEERING & RAILROAD TAX BUREAU
 APPROVED AS A TAX MAP PURSUANT TO THE
 PROVISIONS OF CHAPTER 175, LAWS OF 1913, ETC.
 FOR THE DIRECTOR, DIVISION OF TAXATION
 BY: *E. A. Bonus*
 STATE SUPERVISOR
 DATE JUN - 8 1961, SERIAL NO. 320

TAX MAP
TOWNSHIP OF MANALAPAN
 MONMOUTH COUNTY NEW JERSEY
 SCALE 1"=200' MARCH 1960
 ORIGINAL BY: EDWARD A. BONUS - L.S. LIC NO. 8317
 REVISED BY: JOHN ALLGAIR - TOWNSHIP ENGINEER
 C.M.E. ASSOCIATES
 P.E. & L.S. N.J. LIC. NO. 12012