

ADJOINS SHEET NO. 20

ADJOINS SHEET NO. 21

ADJOINS SHEET

REV.	DESCRIPTION	CHK. BY
11/2005	DATE REVISIONS PER STATE REVIEW	G.T.L.
8/2001	REVISIONS TO CORRECT STATE REVIEW COMMENTS	C.M.E.
2/2001	REVISIONS TO CORRECT STATE REVIEW COMMENTS	C.M.E.
2/2001	REVISIONS TO CORRECT STATE REVIEW COMMENTS	C.M.E.

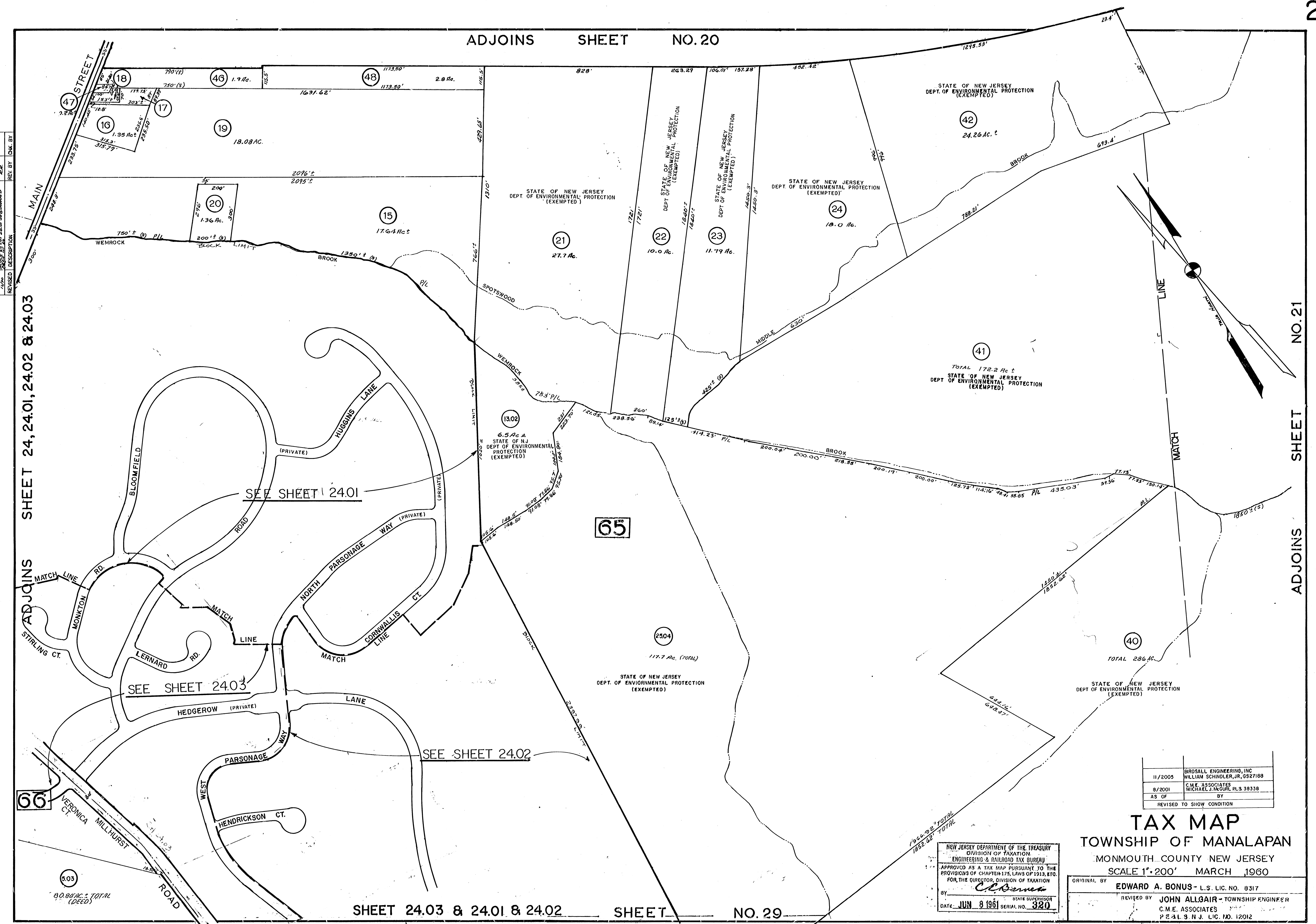
ADJOINS SHEET 24, 24.01, 24.02 & 24.03

ADJOINS SHEET 24.01

ADJOINS SHEET 24.02

ADJOINS SHEET 24.03

80.88 AC. TOTAL (DEED)



SHEET 24.03 & 24.01 & 24.02 SHEET NO. 29

1951.92' TOTAL  
1822.02' TOTAL

NEW JERSEY DEPARTMENT OF THE TREASURY  
DIVISION OF TAXATION  
ENGINEERING & SURVEYING TAX BUREAU  
APPROVED AS A TAX MAP PURSUANT TO THE  
PROVISIONS OF CHAPTER 175, LAWS OF 1913, ETC.  
FOR THE DIRECTOR, DIVISION OF TAXATION

*C.M.E.*  
STATE SUPERVISOR  
DATE JUN 9 1981 SERIAL NO. 320

11/2005	GROBALL ENGINEERING, INC WILLIAM SCHINDLER, JR. 0327188
8/2001	C.M.E. ASSOCIATES MICHAEL J. MCGURK PLS. 38338
AS OF	BY
REVISED TO SHOW CONDITION	

**TAX MAP**  
**TOWNSHIP OF MANALAPAN**  
MONMOUTH COUNTY NEW JERSEY  
SCALE 1"=200' MARCH 1960

ORIGINAL BY **EDWARD A. BONUS - L.S. LIC. NO. 8317**  
REVISED BY **JOHN ALLGAIR - TOWNSHIP ENGINEER**  
C.M.E. ASSOCIATES  
P.E. & L.S. LIC. NO. 12012

MATCH

LINE