

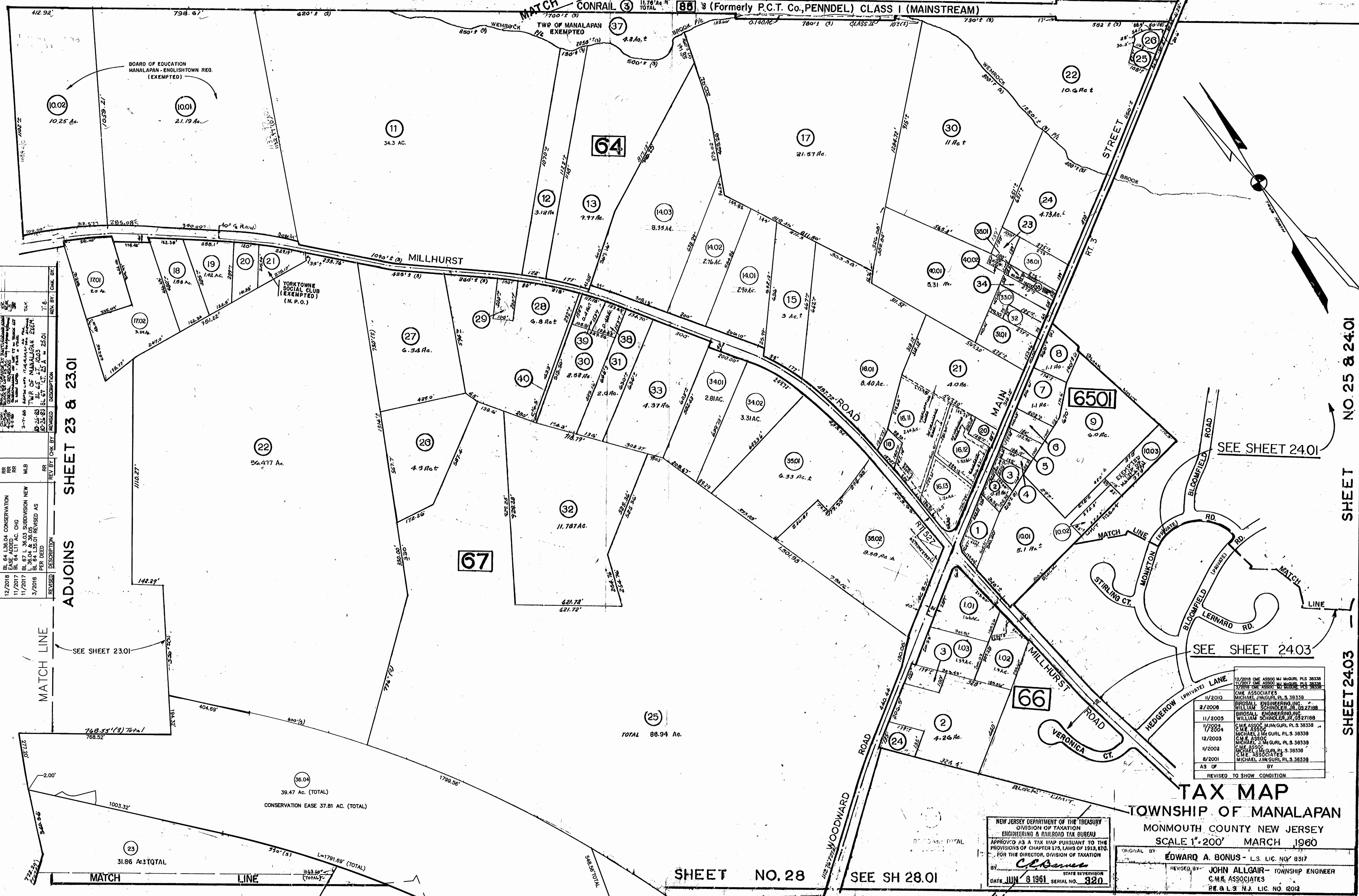
ADJOINS SHEETS NO. 19 & 20

27 13 TOTAL 13.475 Ac. ±

CONRAIL 3 11.78 Ac. ± TOTAL

88 3 (Formerly P.C.T. Co., PENNDEL) CLASS I (MAINSTREAM)

1,958' (3) TOTAL



REV.	BY	CHK.	DATE	DESCRIPTION
12/2016	EL	EL	12/2016	BL 64, L 36.04 CONSERVATION
11/2017	RR	RR	11/2017	BL 64, L 36.04 AC. CHG
11/2017	RR	RR	11/2017	BL 67, L 36.03 SUBDIVISION NEW
3/2016	MLB	MLB	3/2016	BL 64, L 36.04 & 36.05 PER DEED
3/2016	MLB	MLB	3/2016	BL 67, L 36.03 REVISED AS PER DEED

ADJOINS SHEET 23 & 23.01

SEE SHEET 24.01

SEE SHEET 24.03

SHEET NO. 25 & 24.01

SHEET 24.03

REVISED	DESCRIPTION
12/2016	CME ASSOC MUMGURL PL 3.38338
11/2017	CME ASSOC MUMGURL PL 3.38338
3/2016	CME ASSOC MUMGURL PL 3.38338
11/2010	CME ASSOCIATES MICHAEL J. MUMGURL PL 3.38338
3/2008	BROSAL ENGINEERING INC WILLIAM SCHINDLER JR. 0327188
11/2005	BROSAL ENGINEERING INC WILLIAM SCHINDLER JR. 0327188
11/2003	CME ASSOC MUMGURL PL 3.38338
11/2003	CME ASSOC MUMGURL PL 3.38338
12/2003	CME ASSOC MUMGURL PL 3.38338
11/2002	CME ASSOC MUMGURL PL 3.38338
8/2001	CME ASSOCIATES MICHAEL J. MUMGURL PL 3.38338

TAX MAP
TOWNSHIP OF MANALAPAN
 MONMOUTH COUNTY NEW JERSEY
 SCALE 1"=200' MARCH 1960

NEW JERSEY DEPARTMENT OF THE TREASURY
 DIVISION OF TAXATION
 ENGINEERING & RAILROAD TAX BUREAU
 APPROVED AS A TAX MAP PURSUANT TO THE PROVISIONS OF CHAPTER 175, LAWS OF 1913, ETC.
 FOR THE DIRECTOR, DIVISION OF TAXATION
Edward A. Bonus
 STATE SUPERVISOR
 DATE JUN 8 1961 SERIAL NO. 320

ORIGINAL BY **EDWARD A. BONUS - L.S. LIC. NO. 8317**
 REVISED BY **JOHN ALLGAIR - TOWNSHIP ENGINEER**
C.M.R. ASSOCIATES
 P.E. L.S. N.J. LIC. NO. 12012

SHEET NO. 28 SEE SH 28.01