

REVISION		
DATE	NAME	NO.
11/2005	BIRDSALL ENGINEERING, INC.	03 27188
10/2008	WILLIAM SCHINDLER, JR.	PLS38338
10/2008	CME ASSOC. M.J. McGUIRE	PLS38338

REV. NO.	CHK. BY	DESCRIPTION
1	T.E.	11-11-05 11:03 COLLECTED
2	T.E.	11-11-05 11:07 L.A.C.
3	T.E.	11-11-05 11:07 L.A.C.
4	T.E.	11-11-05 11:07 L.A.C.
5	T.E.	11-11-05 11:07 L.A.C.
6	T.E.	11-11-05 11:07 L.A.C.
7	T.E.	11-11-05 11:07 L.A.C.
8	T.E.	11-11-05 11:07 L.A.C.
9	T.E.	11-11-05 11:07 L.A.C.
10	T.E.	11-11-05 11:07 L.A.C.

REV. NO.	CHK. BY	DESCRIPTION
1	T.E.	11-11-05 11:03 COLLECTED
2	T.E.	11-11-05 11:07 L.A.C.
3	T.E.	11-11-05 11:07 L.A.C.
4	T.E.	11-11-05 11:07 L.A.C.
5	T.E.	11-11-05 11:07 L.A.C.
6	T.E.	11-11-05 11:07 L.A.C.
7	T.E.	11-11-05 11:07 L.A.C.
8	T.E.	11-11-05 11:07 L.A.C.
9	T.E.	11-11-05 11:07 L.A.C.
10	T.E.	11-11-05 11:07 L.A.C.

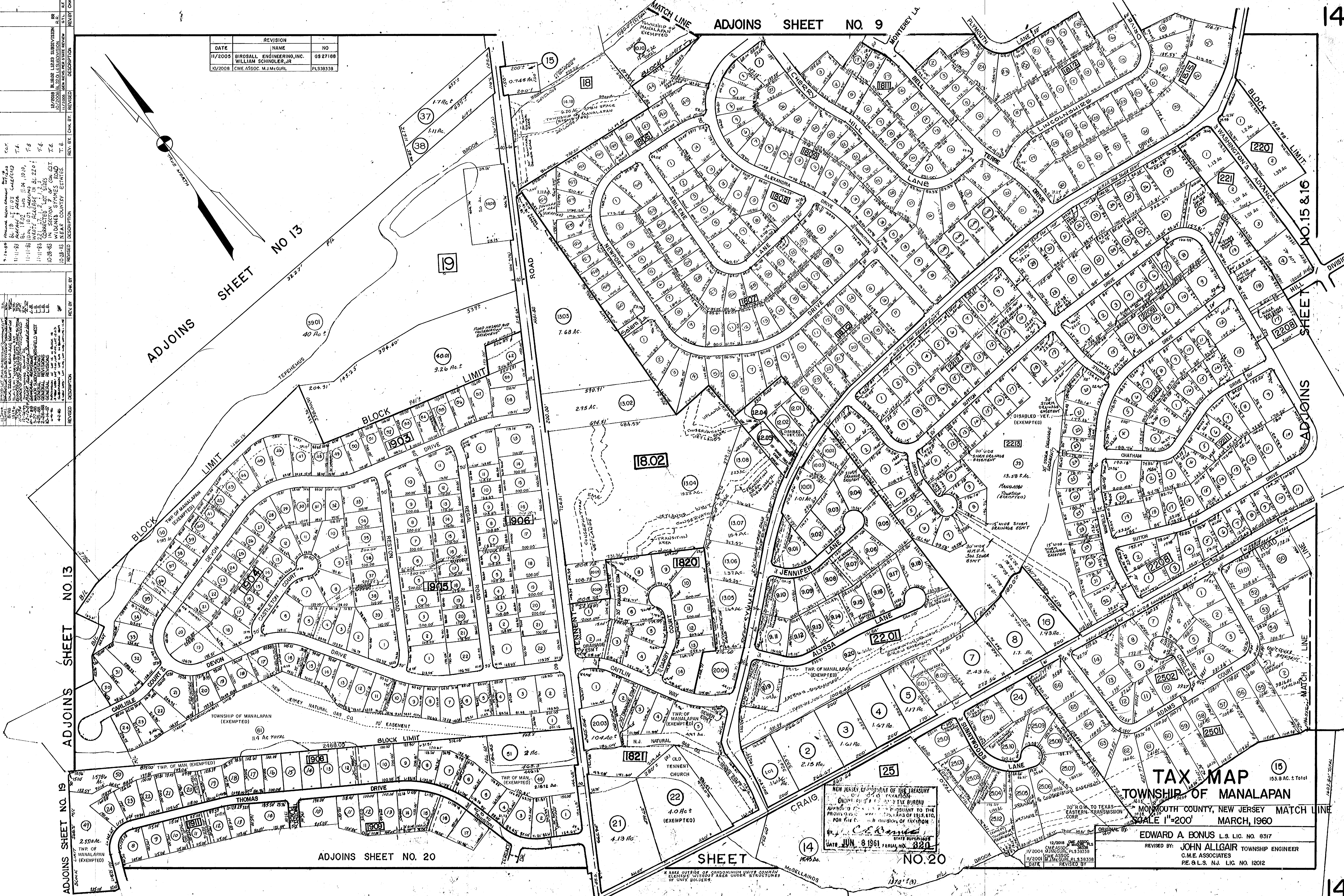
ADJOINS SHEET NO. 9

ADJOINS SHEET NO. 13

TAX MAP
TOWNSHIP OF MANALAPAN
MONMOUTH COUNTY, NEW JERSEY MATCH LINE
SCALE 1"=200'
MARCH, 1960

EDWARD A. BONUS L.S. LIC. NO. 8317
REVISED BY: JOHN ALLGAIR TOWNSHIP ENGINEER
C.M.E. ASSOCIATES
P.E. & L.S. N.J. LIC. NO. 12012

NEW JERSEY DEPARTMENT OF THE TREASURY
DIVISION OF TAXATION
PROPERTY TAX BUREAU
APPROXIMATE TAX VALUE OF THIS PARCEL OF LAND TO BE EXEMPTED FROM PROPERTY TAXATION
FOR THE YEAR 1960
DATE JUN. 8 1961 SERIAL NO. 3801
BY: C.E. BONUS
12/2016 CME ASSOC. PLS38338
11/2004 CME ASSOC. PLS38338
10/2008 CME ASSOC. PLS38338
DATE: REVISED BY:



SHEET NO. 20