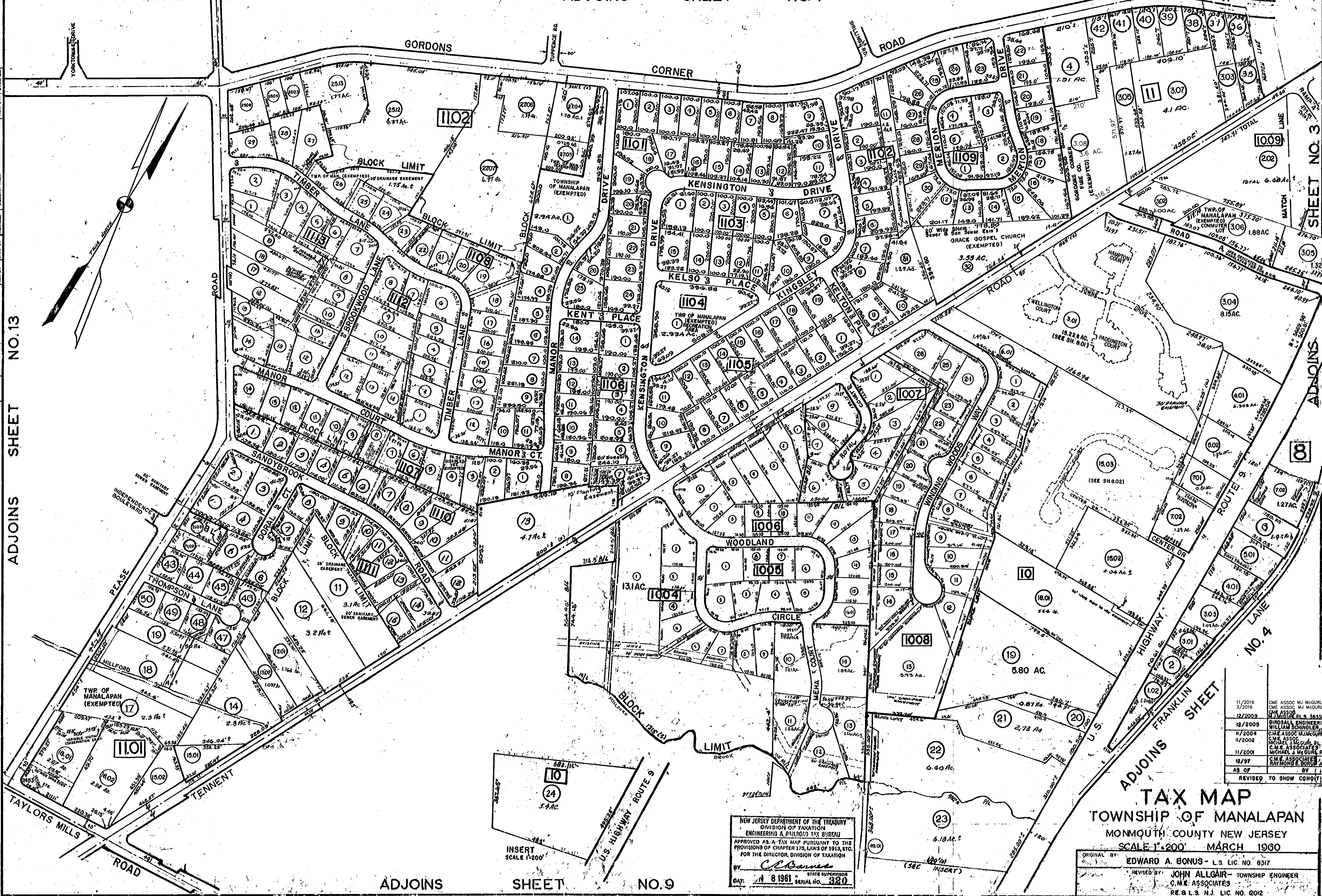


ADJOINS SHEET NO. 12

ADJOINS SHEET NO. 7

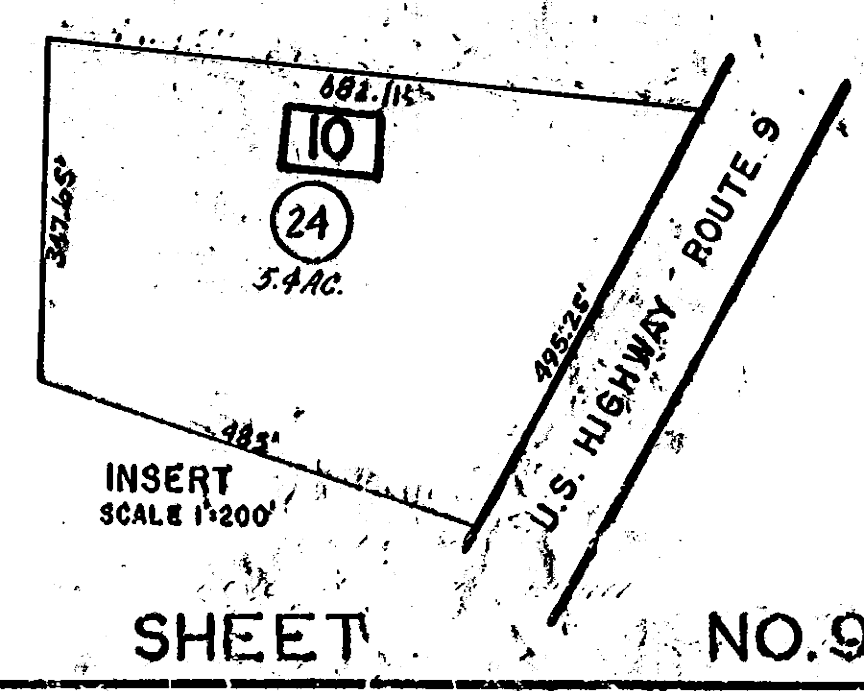
ADJOINS SHEET NO. 13  
ADJOINS SHEET NO. 13  
ADJOINS SHEET NO. 13

ADJOINS SHEET NO. 3  
ADJOINS SHEET NO. 3  
ADJOINS SHEET NO. 3



REV. BY	CHK. BY	DESCRIPTION
11/2019	BE, HILCOX	308 CONSOLIDATED
4/2018	BE, HILCOX	1275 US EASE ADDED
2/2016	BE, HILCOX	1275 US EASE ADDED
1/2016	BE, HILCOX	1275 US EASE ADDED
12/2015	BE, HILCOX	1275 US EASE ADDED
12/2015	BE, HILCOX	1275 US EASE ADDED
12/2015	BE, HILCOX	1275 US EASE ADDED
12/2015	BE, HILCOX	1275 US EASE ADDED
12/2015	BE, HILCOX	1275 US EASE ADDED
12/2015	BE, HILCOX	1275 US EASE ADDED
12/2015	BE, HILCOX	1275 US EASE ADDED
12/2015	BE, HILCOX	1275 US EASE ADDED
12/2015	BE, HILCOX	1275 US EASE ADDED
12/2015	BE, HILCOX	1275 US EASE ADDED
12/2015	BE, HILCOX	1275 US EASE ADDED
12/2015	BE, HILCOX	1275 US EASE ADDED
12/2015	BE, HILCOX	1275 US EASE ADDED
12/2015	BE, HILCOX	1275 US EASE ADDED
12/2015	BE, HILCOX	1275 US EASE ADDED
12/2015	BE, HILCOX	1275 US EASE ADDED

11/2019	CME ASSOC MJ MCGUILL PLS 38338
3/2016	CME ASSOC MJ MCGUILL PLS 38338
12/2009	CME ASSOC MJ MCGUILL PLS 38338
12/2009	BIRDSONG ENGINEERING, INC. 38338
11/2004	WILLIAM SCHUMER, JR. CS 27889
11/2002	C.M.E. ASSOCIATES PLS 38338
11/2002	C.M.E. ASSOCIATES PLS 38338
11/2001	C.M.E. ASSOCIATES PLS 38338
12/97	RAYMOND J. BONDI JR. PL 3 12803
AS OF	BY
REVISED TO SHOW CONDITIONS	



NEW JERSEY DEPARTMENT OF THE TREASURY  
DIVISION OF TAXATION  
ENGINEERING & RAILROAD TAX BUREAU  
APPROVED AS A TAX MAP PURSUANT TO THE  
PROVISIONS OF CHAPTER 175, LAWS OF 1915, ETC.  
FOR THE DIRECTOR, DIVISION OF TAXATION  
BY *C. Bonus*  
STATE SUPERVISOR  
DATE: 11 8 1961 SERIAL NO. 320

**TAX MAP**  
TOWNSHIP OF MANALAPAN  
MONMOUTH COUNTY NEW JERSEY  
SCALE 1"=200' MARCH 1960  
ORIGINAL BY: EDWARD A. BONUS - L.S. LIC. NO. 8317  
REVISED BY: JOHN ALLGAIR - TOWNSHIP ENGINEER  
C.M.E. ASSOCIATES  
P.E. & L.S. N.J. LIC. NO. 12012