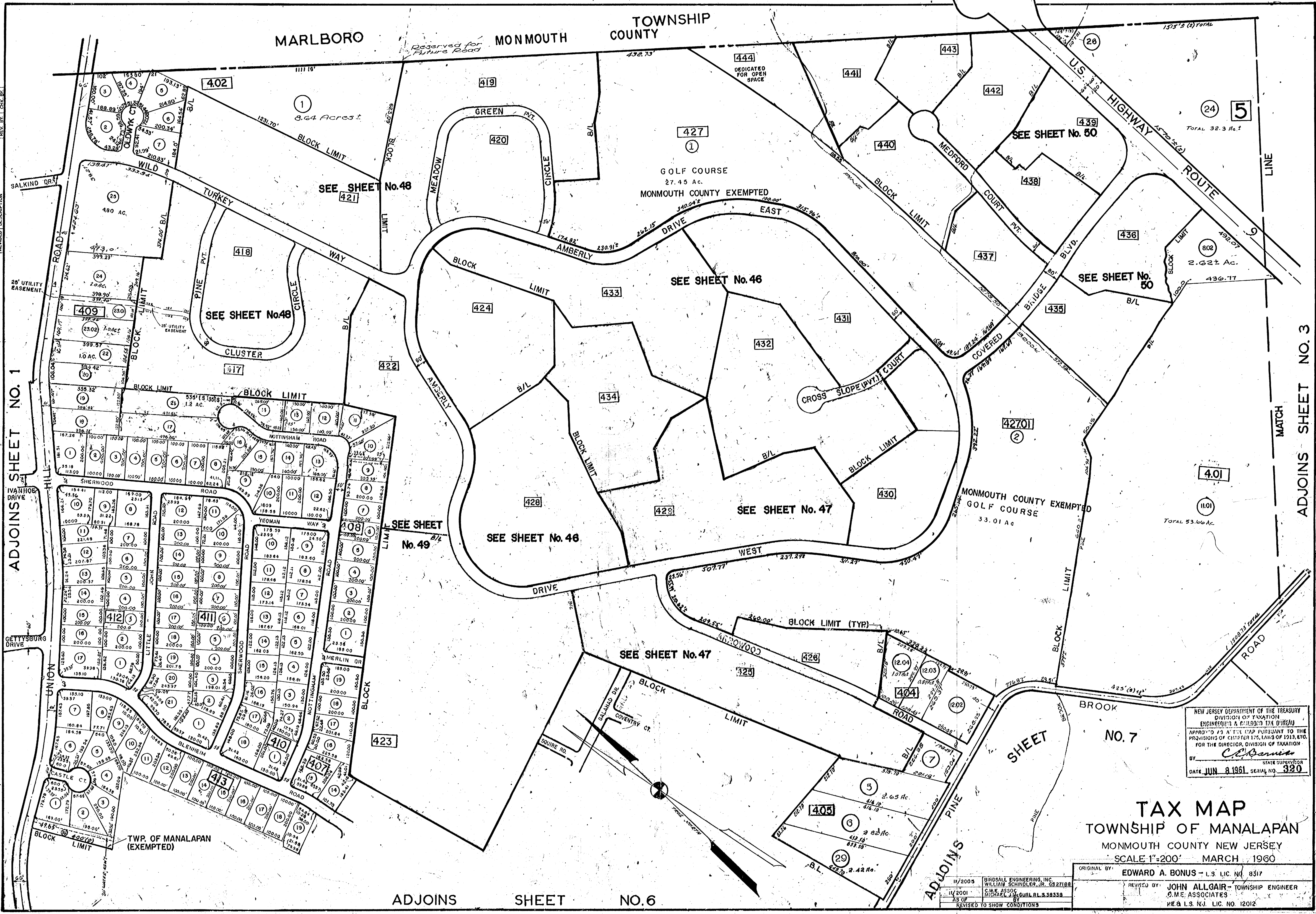


GENERAL NOTES:
 1. ALL LOTS ARE TO BE CONVEYED TO THE TWP. OF MANALAPAN BY DEED.
 2. ALL LOTS ARE TO BE CONVEYED TO THE TWP. OF MANALAPAN BY DEED.
 3. ALL LOTS ARE TO BE CONVEYED TO THE TWP. OF MANALAPAN BY DEED.
 4. ALL LOTS ARE TO BE CONVEYED TO THE TWP. OF MANALAPAN BY DEED.
 5. ALL LOTS ARE TO BE CONVEYED TO THE TWP. OF MANALAPAN BY DEED.
 6. ALL LOTS ARE TO BE CONVEYED TO THE TWP. OF MANALAPAN BY DEED.
 7. ALL LOTS ARE TO BE CONVEYED TO THE TWP. OF MANALAPAN BY DEED.
 8. ALL LOTS ARE TO BE CONVEYED TO THE TWP. OF MANALAPAN BY DEED.
 9. ALL LOTS ARE TO BE CONVEYED TO THE TWP. OF MANALAPAN BY DEED.
 10. ALL LOTS ARE TO BE CONVEYED TO THE TWP. OF MANALAPAN BY DEED.



NEW JERSEY DEPARTMENT OF THE TREASURY
 DIVISION OF TAXATION
 ENGINEERS & SURVEYORS TAX BUREAU
 APPROVED AS A TAX MAP PURSUANT TO THE
 PROVISIONS OF CHAPTER 176, L.A.S. 1914, E.T.O.
 FOR THE DIRECTOR, DIVISION OF TAXATION
 BY: *C. J. Dennis* STATE SUPERVISOR
 DATE JUN 8 1961 SERIAL NO. 320

TAX MAP
 TOWNSHIP OF MANALAPAN
 MONMOUTH COUNTY NEW JERSEY
 SCALE 1"=200' MARCH 1960

ORIGINAL BY: EDWARD A. BONUS - L.S. LIC. NO. 8317
 REVISED BY: JOHN ALLGAIER - TOWNSHIP ENGINEER
 G.M.E. ASSOCIATES
 P.E. & L.S. N.J. LIC. NO. 12012