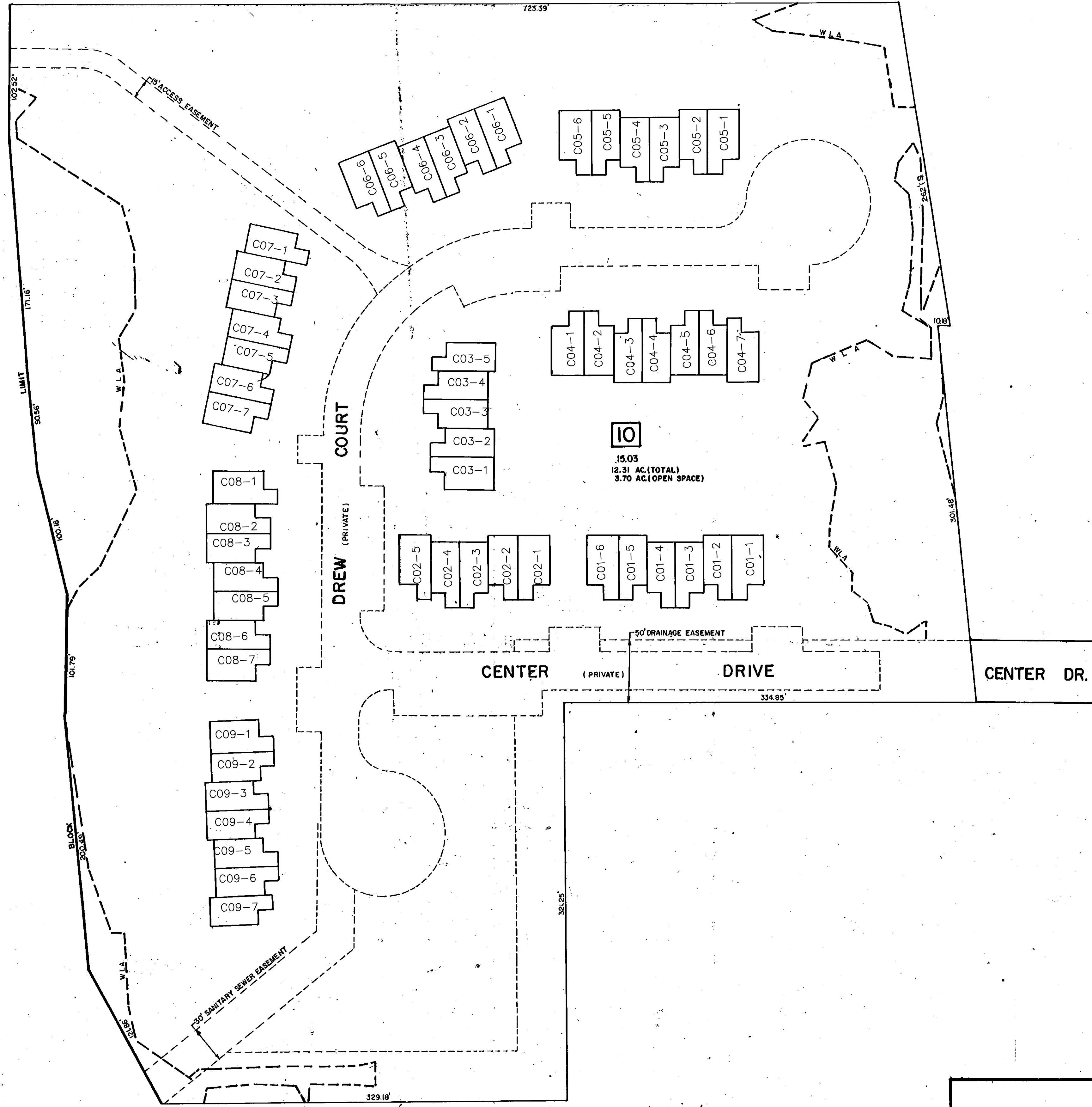


SHEET 8 & 801

12/2019	BL TO LIS 03	COND. NO. REVISED	RR
11/2008	GEN. REVISIONS PER STATE REVIEW	ST L	R.F.
	DESCRIPTION	REV BY	CHK BY



SHEET 8

SHEET 8

SHEET 8

12/2019	CME ASSOCIATES	M. McGUIRE PLS 38338
11/2008	BIRDSONG ENGINEERING, INC.	WILLIAM SCHINDLER, JR. 09 27188
AS OF	BY	
REVISED TO SHOW CONDITIONS		

TAX MAP
TOWNSHIP OF MANALAPAN
 MONMOUTH COUNTY NEW JERSEY
 SCALE 1"=50' JANUARY, 1998
RAYMOND E. BORUP JR., P.L.S.
 C.M.E. ASSOCIATES
 3141 BORDENTOWN AVENUE
 PARLIN, N.J. 08859
 JOHN ALLGAIR, P.E., TOWNSHIP ENGINEER