



## Summer Program 2020 Information Guide

### Inside this issue:

|                   |   |
|-------------------|---|
| Summer Camp Guide | 1 |
| Registration Info | 2 |
| Fundamentals      | 3 |
| Travel Camp       | 4 |
| Key Dates         | 5 |

### Manalapan Recreation

120 Route 522  
Manalapan, NJ 07726  
732-446-8355  
[WWW.MTNJ.ORG](http://WWW.MTNJ.ORG)

Office Address:  
93 Freehold Road

Mona Cholowinski  
Superintendent  
of Parks  
and Recreation  
Jim Tumbleson  
Summer Program  
Coordinator

## Camp Registration

**Saturday April 25**

**9:00am– 11:00am**

**For Regular and Travel Camps!**

Register online OR  
mail in/drop off registration with check to  
Recreation office in advance of 4/25.  
These registrations will be entered into the system  
on 4/25 in order of receipt.

93 Freehold Road, Manalapan (drop off)  
120 Route 522, Manalapan (mail in)

**\*\*UPDATE for 2020\*\***

**Kindergarten registrations may be done online  
with a credit card, but will not be finalized  
until a current report card  
and birth certificate are received.**

Township Committee

Jack McNaboe  
Mayor

Susan Cohen  
Deputy Mayor

Mary Ann Musich  
Township Committee

Barry Jacobson  
Township Committee

Eric Nelson  
Township Committee



## 9th Graders Eligible for Travel Camp!

**Changes in 2020  
CIT Program!**  
Go to page 3  
for details

**New Fees in 2020!**

Higher rate directly  
caused by State minimum  
wage increase

Be sure to take advantage  
of our early bird fees!

**\*NO REGISTRATIONS ACCEPTED AFTER JUNE 3\***

**Registration Information**

Camp runs from  
**June 29 - Aug. 7**  
 (no program July 3)  
 and is open to resident children  
 currently in **grades K-7.**  
 Children currently in **grade 8**  
 may apply as a CIT  
 or join our Travel Camp Program (Page 4).

**Registration max 1150 Campers**  
**Registration fees and Dates**  
**If registered by:**  
 by May 11 ..... **\$650.00**  
 between May 12-June 1..... **\$675.00**

There will be a 2.95% convenience fee added  
 for registering with a credit card.  
 There will be **no switching** permitted  
 once a group has filled.  
 Color change requests may incur a Switching Fee.



Transportation Fee through May 10 is **\$190**  
 Transportation cannot be guaranteed after May 11 & is subject to a \$25 late fee.  
 The After care fee is **\$250** for the entire 6 week program (28 days).  
 The daily fee for after care is **\$11**  
**There is no transportation provided home from after care**

***Special Needs (Non-Allergy)***

**Is your child classified by the Manalapan-Englishtown Board of Education?**  
 If so, special needs accommodations may be available depending on individual circumstances.  
 Please register early so we can properly plan to care for the needs of your camper.  
 Space is limited!  
**Registrations received after May 10 may interfere with our ability to do so.**

***Attention parents of 6th and 7th graders!***

For the summer of 2020, there is no need to stress over what color group your child registers for!  
 Cluster 4 will enjoy the summer together spending the day with whatever friends they wish (within their grade). In early June, campers will be placed into color groups for attendance and accountability purposes, however they will be able to spend the day with whomever they choose within their grade.  
 This has been our practice for the past several years and we want to ensure parents are aware so we can make the registration process less tense for the parents and campers!

**DID YOU KNOW???**

Anyone employed in Manalapan Township may be eligible  
 to register their child for the Summer Program.

**Remember to Register Your Child in The Grade They Are Currently In!!!**

## Fundamentals of the Manalapan Summer Recreation Program

### Location and Length

All of the camp groups are centrally located at the Manalapan Recreation Center directly across from the Municipal Building on Route 522.

The Recreation Center is conducive to a variety of activities for the campers while maintaining effective supervision.

The program runs from Monday, June 29th through Friday, Aug 7th (No program on July 3th).

**The final day of the program August 7th will be a half day (ends at 12:00 pm).**

There will be no aftercare on August 7th

### Organization

For effective management and organization, the camp groups are divided into four clusters.

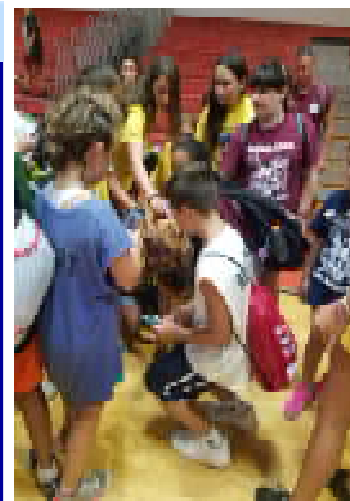
**Cluster 1** includes all campers who are currently in kindergarten and first grades.

**Cluster 2** includes all campers who are currently in second and third grades.

**Cluster 3** includes all campers who are currently in fourth and fifth grades.

**Cluster 4** includes all campers who are currently in sixth and seventh grades (see adjusted arrangement on page 2).

Our Cluster Directors are Certified school teachers. Each grade is also subdivided into several smaller groups headed by a Group Supervisor. The Group Supervisor positions are filled by either adults with teaching experience or upper classmen in college with significant experience as a summer camp employee. To assist with visibility and management, each group will be assigned to a specific colored T-shirt.



### Camp lunch:

Lunch service will not be offered this summer. Campers should bring a non-perishable lunch to camp each day as we do not have refrigeration.

### Splash Pad:

The Splash Pad facility, located on the western end of the Manalapan Recreation Center will be available for use by our younger campers during the program.

### Trips

For variety, the program offers some off-site day trips for those who wish to participate. All trips require an additional registration fee per trip.

Trips are optional. The program will always be available at the camp sites should you choose not to send your child on a scheduled trip.

### Travel

For those children currently in **grades seven, eight and nine** and who enjoy the traveling trip experience, we are offering **Travel Camp again** this summer!

(See page 4 of this brochure for additional information).

### Swimming

With parental consent, campers in all grades will be bussed to local pools for the opportunity to swim approximately twice each week (first & last week excluded).

The swim trips are included in your registration fee.

### CIT

New CIT program for 2020! The CIT program will now include 2 summers of training. Graduating 8th graders may apply to become a CIT. A maximum of 20 participants will be accepted. The program includes two CIT exclusive trips.

Upon satisfactory performance in 2020, individuals will be invited to complete the 2<sup>nd</sup> part of the program in the summer of 2021. Once a CIT has successfully completed both years of the program, employment will be offered based on staff openings and performance evaluation.

Year 1- \$475      Year 2- \$250

Applications are available at [WWW.MTNJ.ORG](http://WWW.MTNJ.ORG).

**Application deadline is April 25**

### After Care

To offer parents an option of picking up their children later than the normal departure time (2:45-3:00 pm), an administrator and a group of After Care counselors are available from 3:00-4:30 pm every camp day.

After Care is held at the Kuschick Pavilion.

**Please note** there is no transportation provided home from After Care. For an additional registration fee, parents can choose to register their children for the entire six-week Summer Recreation After Care program.

Alternatively, parents can make selective use of the After Care program at a daily rate.

**Please note:** The daily After Care rate will apply any time a camper is picked up after 3:00 pm.

There will be no After Care on the last day of camp.

## Summer Program 2020 Information Guide Travel Camp Information

**Available to resident children currently in grades 7, 8 & 9.**

During this five week program campers will be transported by bus to fun-filled attractions across New Jersey, eastern Pennsylvania and New York City.

**For safety reasons the 2020 Travel Camp capacity is 75 campers. No exceptions.**

Registration fee:   Until May 11.....\$1075.00  
                                  May 12 through June 1.....\$1100.00

Transportation fee is \$190.00 (bussing to and from camp site)

\*Please note: Bussing will not be provided home on days of extended day trips.  
Transportation cannot be guaranteed after May 11 and a late fee will be incurred.

**There will be a 2.95% convenience fee added for registering with a credit card.**

**\*After care is not available with this program\***

Registration forms may be downloaded at [www.mtnj.org](http://www.mtnj.org) for mail-in or drop-off or  
Register with a credit card at : <https://register.communitypass.net/manalapan>  
Credit Card payments accepted online only.

**On inclement weather days, the Travel Camp may be cancelled. There are no indoor facilities offered.  
Please have an alternate plan for your child on these days.**

Travel Camp registration fee includes all admission costs and transportation associated with each trip. The schedule will show that lunch may be offered at no extra cost for several trips, but lunch and snacks are NOT included every day.

Travel Camp will be based on the Manalapan Recreation Center Expansion property (West End).

Travel Camp runs from Monday, July 6 through Friday, August 7.

**MEET YOUR LEAD TRAVEL STAFF AT T-SHIRT PICKUP NIGHT ON JUNE 17, 5-8PM!**

Travel Campers will be expected to be dropped off between 8:30 - 8:45 a.m.  
Pick up will be between 3:15 - 3:30 pm, with the exception of extended day trips.

Travel Camp will be staffed by chaperones 16 years of age or older.  
Supervisors will be present on all trip destinations.

Shirts will be issued to all campers and are **REQUIRED** for every trip.  
We will make every attempt to attend all scheduled trips, however in the interest of camper safety, we may postpone, cancel and/or eliminate any trip deemed necessary.

There are no refunds for missed trips.

The Travel Camp staff will make every effort to ensure a fun-filled, safe summer experience.  
However, the Supervisory Staff reserves the right to suspend any camper for disciplinary reasons. Neither partial nor full refunds will be issued.

Still have questions? Call 732-446-8355.

### Anticipated destinations for the Summer of 2020:

|                             |                             |                   |                |
|-----------------------------|-----------------------------|-------------------|----------------|
| Six Flags Great Adventure   | Fun Plex                    | Iplay America     | Roller-skating |
| Dave and Busters            | Six Flags Hurricane Harbor  | Miniature Golf    | and more!      |
| Minor League Baseball games | Jenkinson's Beach/Boardwalk | Bowling           |                |
| Garden State Rocks          | Sky Zone                    | Silverball Arcade |                |



## Key Dates

**Saturday, April 25:** Registration opens.  
Online - 9:00 a.m.  
Mail-in/ Drop off will be entered beginning 9:00 a.m. in order of receipt.

**May:** Trip Registration opens.

**May:** Parent Manuals available

**Wednesday, June 17:** T-Shirt Pick Up  
Summer Program and Travel Camp  
5:00 pm to 8:00 pm at the  
Manalapan Recreation Center Pavilions

**Monday, June 29:**  
First Day of Summer Rec Program.

**Monday, July 6:**  
First Day of Travel Camp

**Friday July 3:**  
Program closed  
Happy Independence Day!

**Thursday, August 6:**  
Final Day of Travel Camp

**Friday, August 7:**  
Final day of Recreation  
(half day)

### **Camp Hours:**

8:15-8:30 Parent Drop-Off and Bus Arrival  
8:30-2:45 Activities of the Camp Day  
2:45-3:00 Parent Pick-Up and Bus Departure  
3:00-4:30 After Care at Kuschick Pavilion.

### **Dress Code:**

All campers must wear their group colored T-shirt every day to camp.  
T-shirts can not be altered in any way.

Campers must wear sneakers every day in order to safely participate in the scheduled activities.

Campers not in compliance will be sent home.

**In the event a camper is going to be picked up and not bussed home, staff needs to be notified by no later than 1:00 pm**

**If the weather becomes inclement and unsafe during the camp day, parents will be notified of an early pick-up time.**



### **EMTs are on staff for the safety of our participants!**

The summer program includes special events like the CIT Olympics, Camp Carnival and more!

**Arts and Crafts are offered several times each week!**



On inclement weather days, the Summer Recreation Program may be cancelled. There will be no indoor facilities offered.

**Please have an alternate plan for your child on these days.**

Still have questions?  
Call

Manalapan  
Parks and Recreation  
732-446-8355

Like us on  
Facebook!

